

FIT,

WORKFIT

FIT TO "YOUR STYLE"



Freedom of movement, Freedom within the workplace.

As more and more people are heading towards the open office space design, WORKFIT is designed with the new-generation working style in mind.

Its open design style facilitates better communication between colleagues and co-workers, and allows for a quicker exchange of information amongst parties.

WORK 01

PREPARE

Providing the space for light work and touch down spot before moving to the next action. Fit to gather information. Provided in the office space Counter and also support accidental communication.



WORK 02

FOCUS

Semi-open seat is fit into the office. Individual tables can be place together to create a focus working workspace. Optional front panel and under table accessories provide an efficient workspace.



WORK 03

DISCUSS

Fit to a meeting to deepen the debate for multiplayer.
It also serve as a quick meeting mode,
Table in harmony with the office desk.
Also it serves as a storage bench,
It corresponds to the increase
or decrease of the number of
participants



WORK 04

MANAGE

Fit to open management.
And intensive work for the manager.
The desk also allows visitors area therefore encourages
communication.



WORK 06

CHAT

Pocket of places within the office environments could fill with casual table for quick discussion and exchanging of information.



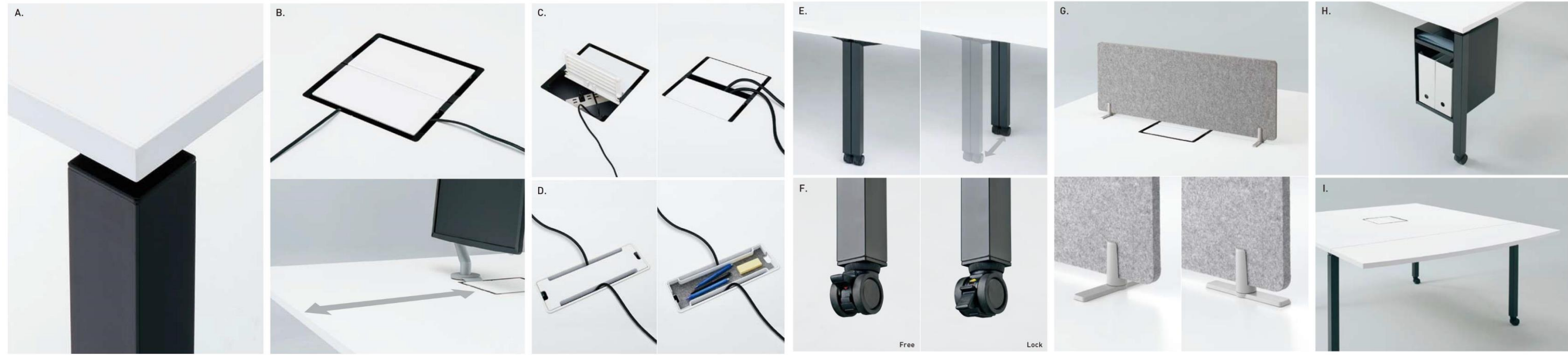
WORK 05

CO-WORK

Open desk allows for open communication and collaboration between employees. Feature a light weight desktop panel, you can simply remove the panel for better communication purpose.



DETAILS



A. DESIGN

Easy to match with a variety of space design, clean design simple. Texture has been detailed and a special painting of the legs was produced for a sense of quality.

B. WIRING FUNCTION

The wiring cover that can be accessed from four directions even if you close the lid. Duct is standard specification. So that can be used widely the desk surface in the depth direction, the side portion of the wiring cover is also possible to clamp attached, such as a monitor.

C. 2 WAY WIRING FUNCTION

Wiring cover to be switched the opening direction on the outside / inside. It can be easily replaced without tools, The worker can easily changed it themselves.

D. 2 WAY WIRING FUNCTION

Simple wiring box to hide the wiring and away from sight. When flip up, you could place the stationery such as pen If possible. You can also use in an accessible state to the outlet tap.

E. INTERMEDIA LEGS

When you want to connect the two or more tables, replacement to 369mm inside the leg from the end of the top plate. This it cater for more leg space under the table.

F. LIFT LOCK CASTOR

Stopper is grounded on the floor at the time of the lock, you can secure the table. By turning the adjustment grip of ter top, you can also fine-tune the top plate height.

G. LIGHT WEIGH PANEL

Panel is light enough to remove it seamlessly when not in use. Or you could simply place it on top of the table to create a divider.

H. HANGING STORAGE

Additional and optional storage are available for more storage space.

I. END TABLE

Widely used for extension top board the desk surface.

PRODUCTS

VARIATION



SD-WFC1214P81MAW

- W1200×D1400

SD-WFA1214□ SD-WFC1214□



SD-WFC2414SAAMAW

- W2400×D1400 スタンダードテーブル

SD-WFA2414□ SD-WFC2414□

L-Shaped Table



SD-WFCL1616E6AMP2

- W1600×D1600

SD-WFAL1616□ SD-WFCL1616□

Storage Set Plan



- Cushioned Island Plan

- High Counter Plan

NEW OPTION



- Lightweight Panel
SDV-WFL63E2 ^{GUC2-GUE5-GU0J-GU35-GULG-GUIN}

SDV-WFL83E2 ^{GUC2-GUE5-GU0J-GU35-GULG-GUIN}



- Hanging Storage
SDA-WFB24SAA-E6A

Meeting Table



SD-WFTBC189E6AMG5

- W1800×D900

SD-WFTBA189□ SD-WFTBC189□

Storage



BWU-WF44SAWHSE1

- Mobile Stool
BWU-WF44SAWHSE1-HSE5



BWU-CNK09SAWHSE1

- Open Bench
BWU-CNK09SAWHSE1-HSE5



BWU-CNLRIA09SAWHSE1

- Lateral Bench
BWU-CNLRIA09SAWHSE1-HSE5



- Single Base
BWUB-S9SAW



- Machine Corner plan

- Recycling Corner plan



- End Table
SD-WFE124E6A ^{MAW-M10-MP2-MG5}

SD-WFE144E6A ^{MAW-M10-MP2-MG5}



- End Panel
SDV-WF12E ^{HSE1-HSE5-HSM1-HST1-HSQ1-HSY1}

SDV-WF14E ^{HSE1-HSE5-HSM1-HST1-HSQ1-HSY1}

COLOR

	MAW	MAW	MAW	M10	MP2	MG5
Table Top						
Leg						
	SAA	P81	E6A	SAA	E6A	E6A
	SAAMAW	P81MAW	E6AMAW	SAAM10	E6AMP2	E6AMG5

Body				
	SAW		HSE1	HSE5

	Hanging storage		Lightweight panel						Back panel					
Body														
	SAA	E6A	GUC2	GUE5	GU0J	GU35	GULG	GUIN	HSE1	HSE5	HSM1	HST1	HSQ1	HSY1

- Specifications may varies, please contact your local KOKUYO's sales office or dealers for more information.

- Information in this brochure may change without further notice.

- All copyrights and intellectual property rights including trademarks and copywrite, remain the property of KOKUYO. No part of this brochure may be reproduced without prior written permission from KOKUYO.

WORKFIT
MAKES YOU ACTIVE



KOKUYO

Osaka | Tokyo | Shanghai | Beijing | Shenzhen | Hong Kong | Singapore | Kuala Lumpur | Bangkok

- Specifications may varies, please contact your local KOKUYO's sales office or dealers for more information.
- Information in this brochure may change without further notice.
- All copyrights and intellectual property rights including trademarks and copywrite, remain the property of KOKUYO. No partof this brochure may be reproduced without prior written permission from KOKUYO.